



WORKING WITH NATURE

**AUTENTICO
VOLTERRA**

NATURAL PRODUCT

APPLICATION GUIDELINES

Autentico Volterra is a heavy-bodied lime paint and combines the ease of application of standard lime paint with the beauty of a plastered finish.

Lime paint, in general, is a paint that has been in use for ages. Unlike standard paints, lime paint doesn't create a film during the drying process but cures through carbonation. This process occurs when the lime sets by absorbing CO₂ from the air. This cyclic process is unique and valuable when you feel -just like we do- environmental impact must be taken into account.

Lime paint is a CO₂ neutral paint solution and is due to its relatively high pH value anti-bacterial and anti-allergic.

If you combine the environmental advantages with the ease of use and the beauty of the finish, you meet Autentico Volterra. A lime paint that we make with pride and joy.

Applying lime paint isn't difficult, and when you accept the natural characteristics, a beautiful and healthy finish is within reach. Please read the following pages carefully to make the most out of **Autentico Volterra**.

PREPARATION

Lime paint needs a mineral surface to set and cure. If your wall suffers from uneven suction, for example, when repairs have been made, or there is a risk of bleeding through (in case of general pollution, for example, nicotine stains), apply a coat of **Autentico stainblocking primer** to ensure and create even suction.

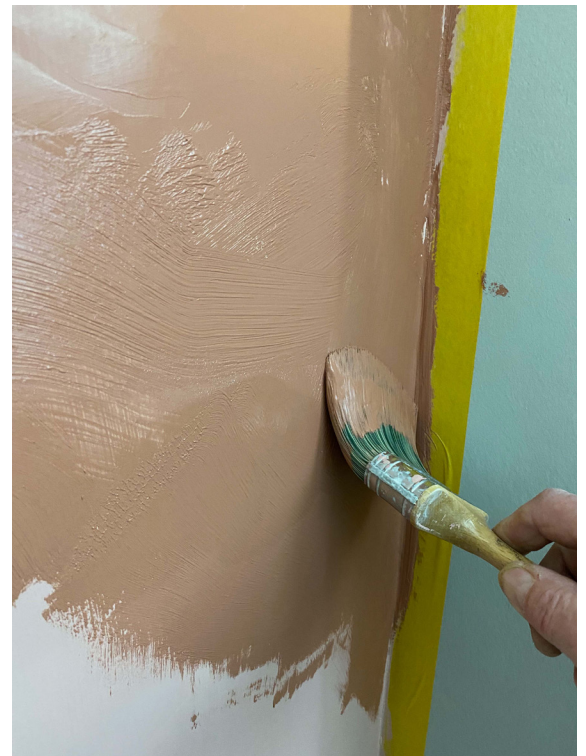
Let the stainblocking primer (if application was needed) dry for at least 4 hours.

APPLICATION STEP 1

Apply one coat of **Autentico Vintage**, in the same colour as your desired finished colour of Autentico Volterra.

Apply Autentico Vintage with a 3" wide brush, ideally in a criss-cross manner.

Let Vintage dry for at least 4 hours.



APPLICATION STEP 2

Start the application of Autentico Volterra.

Tools you need:

Autentico 3" brush: This is a flat, wide brush that can handle the thickness of Volterra.

Trowel or wide putty knife to smoothen Volterra.

400-600 grid sandpaper to sand away unwanted irregularities.

Good quality masking tape (you probably already used it before applying the stainblocking primer and/or Velvet)

If you are right-handed, start applying Volterra in the top left-hand corner of the wall. If you are left-handed, start at the top right-hand corner. Use the 3" wide brush.

Work down and to the sides to form a grapevine pattern.

After covering an area of approximately 40 x 40 cm, and with the Volterra still wet, smooth the Volterra out with a trowel or wide putty knife. Keep the trowel/putty knife at an angle of 30 degrees. You will see and feel how easy that is. Clean the edge of the trowel/putty knife regularly.

In the picture on the right, you see the top right-hand corner already smoothened out, while the lower part still shows brush marks.

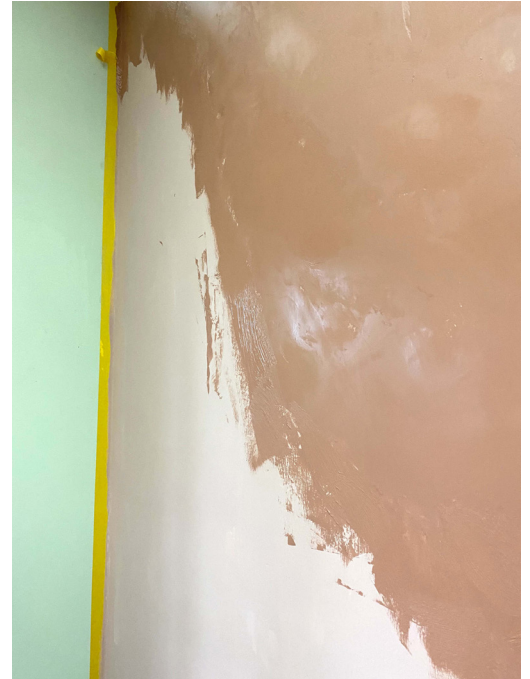
Keep a wet edge and gradually work your way down and to the sides. By keeping a wet edge, you avoid drying patterns becoming visible.

Note that Volterra looks darker when still wet, but it will set and cure to the same colour as the underlying Vintage (in this case, the colour was Massai)



On the picture on the right, you see how the grapevine pattern evolves while keeping the edges wet and smoothening the brush marks away.

If the area to cover becomes too large and the edges start to dry before you can smoothen them out, work with two. One person applies the Volterra with a brush, while the other does the smoothening.



Some areas may be challenging to smoothen. Try using a smaller and flexible putty knife. You can correct trowel marks later with fine sandpaper when the Volterra has dried completely.



This is how the wall looks like after finishing the grapevine pattern.

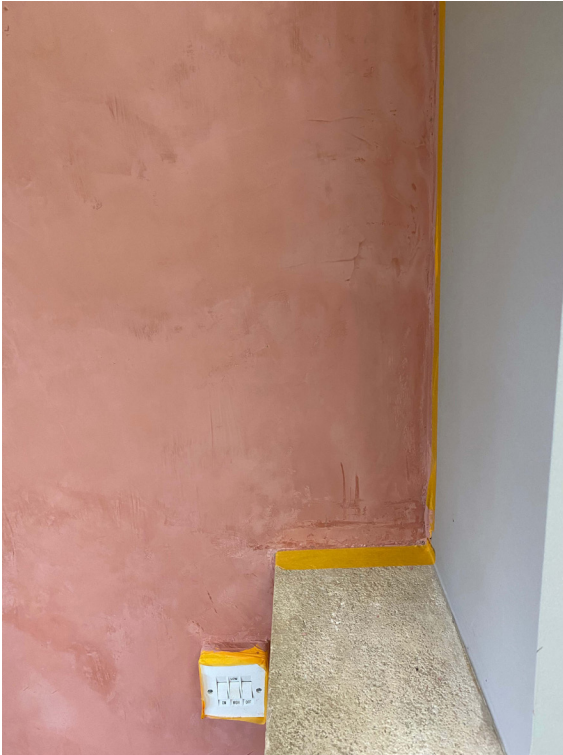
You notice lighter patches appear. This is normal, Volterra is carbonising and absorbing CO₂.

The darker patches will become less and less visible and Volterra shows the colour you were expecting.

However, some patches will remain visible and are part of the charm of lime paint.

Let your work dry for 6-8 hours (depending on surrounding temperatures and humidity)





After Volterra has dried completely (curing continues for several weeks), you may notice some irregularities. You can sand these away using very fine sandpaper (400-600 grid). Don't push too hard; Volterra is still soft.

Remove dust with a lint-free cotton cloth and remove the masking tape. Never use water to clean Volterra; this will leave marks and patches. On the next page, you will find information on protecting Volterra (if needed).

ENJOY!

Enjoy your work and see how Volterra added charm to your walls.

It is certainly not a regular finish, and you will see patches and a cloudy effect. That is what lime paint does and a heavy-bodied lime paint, such as Volterra in particular.

This is the charm Volterra creates. That is Volterra, adding a healthy, sustainable and charming touch.



PROTECTING

The carbonation process continues for about 3 weeks after you applied Volterra. After this period and if needed, you can protect Volterra with Autentico Eco Sealer. Apply the sealer with a roller. Dilute the first coat with 20 % water. Let dry for 2-3 hours and then apply a second coat. Don't dilute the second coat. After drying, Volterra will look slightly darker, this is normal.

RESTRICTED AREAS

Volterra is a damp-open and soft decorative finish. It is excellent to use on walls and furniture, but you shouldn't use it in wet areas, such as shower cubicles.

COVERAGE

If you need to apply **Autentico Stainblocking primer**, this primer only needs one coat and covers 10-12 m²/L

Autentico Vintage, the coloured undercoat for Volterra, also covers 10-12 m²/L. You also need only one coat.

Autentico Volterra is thicker than the usual paint, and it covers between 6-8 m²/L. Volterra comes in a 2.5 L tin and that covers 15-20 m² using just one coat.

Autentico Eco Sealer covers 14 m²/L when diluted with 20 % water and 10-12 m²/L straight from the tin.

WE ARE HERE TO HELP

When you follow the guidelines, Autentico Volterra is easy to apply. Bear in mind, you are working with nature. It is your personal touch that influences the finish.

If you need help, advice or, just want to share your thoughts, email us at support@autentico-paint.com. We are here to help make the most out of this exceptional finish.